

CEL-FI GO2

Smart Signal Booster

Your solution to improve 3G/4G voice and data coverage



CEL-FI
by NEXTIVITY™

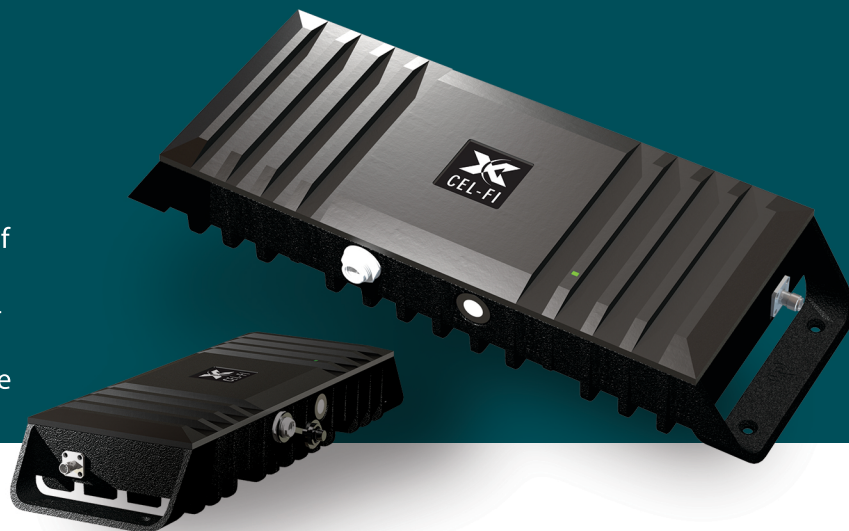


vodafone

Approved for use on the Vodafone network

IMPROVE YOUR MOBILE COVERAGE

Nextivity's Cel-Fi GO2 repeater is a cabled 3G/4G mobile signal amplifier that provides up to 100dB of signal gain. It is a flexible solution optimised for all applications including homes, offices, cars, trucks, 4 wheel drives, caravans, marine vessels and more, to amplify the mobile signal from outside and disburse within.



BENEFITS OF CEL-FI GO2



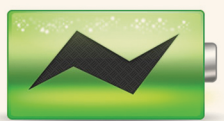
Provides Coverage for Indoor & Outdoor, Buildings & Vehicle Applications

Cel-Fi GO2 is flexible for advanced installations. It has an IP66 protection rating. No longer will you need to move to a particular spot to be able to make and receive phone calls. Your Cel-Fi GO2 can be configured to improve the mobile coverage for many types of applications including homes, offices, cars, trucks, 4 wheel drives, caravans, marine vessels and more.



Increases Mobile Data Speeds

Slow internet speeds on your mobile phone are often caused by low signal. If you suffer from low signal, you will be able to relate to the frustration of trying to access email or the internet. Cel-Fi GO2 will amplify the available LTE/HSPA mobile signal and increase your data speeds.



Extends Mobile Phone Battery Life

Mobile phones use a lot more energy when in poor signal areas. The phone adjusts its internal power output to compensate in an attempt to boost the poor signal. As a result, the phone will consume a lot more battery power. Using Cel-Fi GO2, your indoor mobile signal should be higher, and your battery will last noticeably longer for you to work and talk.



Eliminates Dropped or Missed Calls

Never miss or lose an important call because of coverage issues again. Cel-Fi GO2 will provide continuous coverage so you can be contacted when required. No longer do you have to put up with calls dropping out or terminating during conversation.



Improves Voice Quality

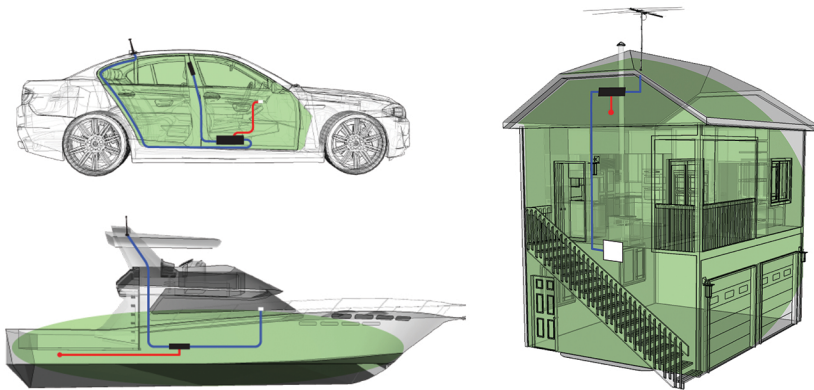
The quality of a voice call is usually determined by the phone's signal strength and nearby interference. With improved signal strength inside your building, the Cel-Fi GO2 will provide crystal clear voice quality for your cell phones.

CEL-FI FEATURES

- Amplifies and disburses a Vodafone 3G /HSPA/4G (LTE) mobile signal.
- Provides automatic selection of the best bands in 3G and 4G without manual intervention.
- Once installed, Cel-Fi GO2 has Automatic Gain Control (AGC) continuously monitoring system path loss to deliver maximum gain up to 100 dB.
- Provides mobile coverage in and around the vehicle/area.
- Rigid cast-aluminium casing with IP66 rating, suitable for adverse environments.
- Network-Safe protection that monitors mobile base stations in real time to ensure the Cel-Fi GO2 does not interfere with the normal function of the mobile network.
- Has an IP66 protection rating.
- Uplink Muting Mode automatically shuts down uplink cellular transmissions when no active user equipment is detected.
- Cel-Fi GO2 supports Bluetooth Connectivity or Micro USB connection to Nextivity's Smartphone or PC WAVE App.
- Intuitive WAVE App allows quick and easy installation by a trained technician.

NOTES

Cel-Fi GO2 will provide coverage for 20+ active users depending on the mobile network capacity in your area.



INSTALLATION

Cel-Fi GO2 requires an indoor and outdoor antenna to work. Available in packs.

Your Cel-Fi GO2 is approved by Vodafone NZ if installed correctly. Only qualified resellers who have undertaken product training should perform installation of Cel-Fi GO2.

Misuse of this equipment could result in injury and equipment damage.

Cel-Fi is the choice of professionals to improve in-building mobile coverage.



SPECIFICATIONS

MODEL

Cel-Fi GO2 for Vodafone AU & NZ

CELLULAR BANDS

Cel-Fi GO2 for Vodafone 3G/4G - supports 3G (900/2100) and 4G (1800/2100/2600)

SYSTEM GAIN

Up to 100 dB per band

DIMENSIONS

Size: 43.5MM (H) 96.5MM (W) 272.5MM (L)
Weight: 850g

ENVIRONMENT

Operating temperature: 0° to 65°C
Relative humidity: 0 to 95%, noncondensing

POWER

12 VDC via external supply
External supply: 100 to 240 VAC, 47 – 63Hz.
Nominal power consumption 16W

ANTENNA REQUIREMENTS

SMA Female Outdoor Antenna Connector (50 Ω)
SMA Female Indoor Antenna Connector (50 Ω)

CERTIFICATIONS

CE Mark, CB Mark, RCM, PTC, R-NZ

WARRANTY

Cel-Fi GO2 is covered by a 24-month warranty.

www.cel-fi.com.au

www.cel-fi.co.nz

